



Protecting the People Who Feed the World

ANNUAL REPORT

A Year of Growth 2019





Protecting the People Who Feed the World

TABLE OF CONTENTS



04	Message: Board Chair	12	Flood Response
05	Message Executive Director: Our First Job	13	Nurse Scholar Program
06	Staff	14	Safety in Agriculture: Women's Health
07	Interns	15	Opioid Misuse Prevention Program & Veterans' Project
08	2019 Financial Statement	16	Invest in Your Health Program
09	Program Highlights	17	2019 AgriSafe in Action
10	Stories from the Field	18	AgriSafe in Action: 2019
11	Total Farmer Health		

A MESSAGE FROM OUR CHAIR

AgriSafe has proven yet again that a small, but committed team of people can get powerful results.

The mission is clear: to support a growing network of trained agricultural health and safety professionals that assure access to preventative services for farm families and the agricultural community resulting in total health. But accomplishing the mission involves the intelligent design and delivery of targeted and tailored content, products, and especially, emphasis on delivering education and knowledge. Accomplishing the mission means seeking out expertise and consultation from the very best practitioners in agricultural health and safety, including agricultural producers and workers. Accomplishing the mission means making sure the organization has the financial resources, the key people, and the essential leadership capabilities to meet the challenges and find the opportunities to “do right” by our agricultural community and workforce. AgriSafe is the team. We invite you to continue reading about the events, activities, and pro-active work of AgriSafe. From leading on the front lines during unprecedented flood events in Nebraska and other Missouri River states, to the considerable yearly activities in educating nurse scholars and other health professionals (including a new state of the art on-line learning lab); AgriSafe demonstrates getting results in protecting those who raise our food, fiber, and fuel. As a non-profit organization dedicated to a trained agricultural health workforce resulting in holistic farmer health, I can simply say, it is value-added.



Carla Wilhite, OTR
Board Chair

Carla Wilhite

A MESSAGE FROM OUR EXECUTIVE DIRECTOR

For those of us working at AgriSafe, **PUBLIC HEALTH** is our first job.

AgriSafe is responsible for identifying emerging threats, organizing solutions and deploying trusted staff and colleagues to make an impact. In 2019 AgriSafe responded to emerging public health threats such as winter flooding in the Midwest, rise in rural opioid deaths and farm stressors that challenged the mental health of farmers. We continue our response to these issues well into 2020 in addition to responding to the Covid-19 pandemic that is hitting our nation and testing our public health infrastructure. As stated recently by many leaders, **PUBLIC HEALTH** is everyone's second job. For those of us working at AgriSafe, **PUBLIC HEALTH** is our first job.

None of us anticipated the current crisis of a Covid-19 pandemic but with steadfast resolve we aim to help stop the transmission, and stop the threats to farmers, ranchers and farmworkers. Our weekly Covid-19 Think Tanks serve as strategy to rapidly disseminate important information across the globe. We joined forces with the experts at the 11 federally funded NIOSH agricultural centers to catalog the wealth of resources, trainings and guidance being generated in real time on the pandemic.

Yes, we are all working harder but we must continue to work smarter. We can't afford to work in isolation even though we are being isolated. If you are not already a partner within AgriSafe's broad network, join us. By becoming an official member of AgriSafe you demonstrate that by joining forces we can do so much more. Our roots began in 2003 with nurses who believed in the power of collaboration. In the midst of the Covid-19 pandemic we are rooted in that strength-together we will advance public health measures to **Protect the People who Feed the World.**



Natalie Roy, MPH
Executive Director

Natalie Roy

MEET THE TEAM: 2019 STAFF



Natalie Roy, MPH
Executive Director



Charlotte Halverson, BSN, COHN-S
Clinical Director



Linda Emanuel, RN
Community Health Nurse



Stacey Jenkins, BS
Website and Online Director



Knesha Rose-Davison, MPH
Health Communications Director



Ansley Fey, MPH
Program Manager

MEET THE TEAM: 2019 INTERNS



Clarke Evans
MPH student at LSUHSC
Health Communications intern



Ansley Fey, MPH
MPH graduate at LSUHSC
Health Communications intern,
currently AgriSafe Program Manager



Parth Dave
MPH student at LSUHSC
Invest in Your Health program

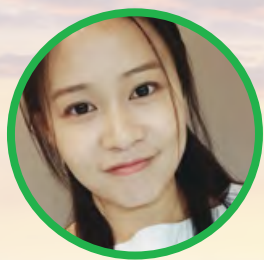


Amanda Livingston
MPH student at
Columbia Southern University
Women's Health Outreach Coordinator

**OVER 1000
VOLUNTEER
HOURS!**



Tong Li
MPH student at Tulane University,
Data Analyst for various programs



Daisy Ren
MPH student at Tulane University
Opioid Misuse Prevention program



Maurene Param
Undergraduate student at Tulane University,
Marketing intern Opioids Project



Leigh Ann Williams
MPH student at LSUHSC
Invest in your Health program

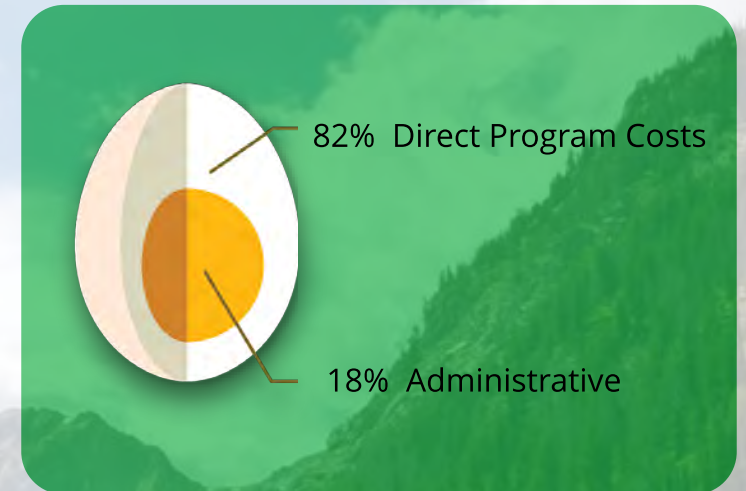
FINANCIAL STATEMENT

Non-profit excellence is reflected on an organization's ability to direct contributions to program needs rather than operations. AgriSafe operational costs consistently fall under 20% of the total budget with the most recent year operating at only 18% of the total budget.

STATEMENT OF FINANCIAL POSITION

2019

Support & Revenue	
Grant Income	\$ 513,225
Membership Dues	13,550
Misc Income	11,611
Interest Income	385
Total	538,771
Change in Net Assets	50,484
Net Assets at beginning of year	238,113
Net Assets at end of year	288,597
Program-Training & Tech	206,534
Program- Communications & PR	119,316
Program Resource Development	89,763
General Administration	92,418
Total Expenses	\$508,031



PROGRAM HIGHLIGHTS

2019 WAS A YEAR OF GROWTH!

AgriSafe programs expanded both in topics and impact. We added training topics to address health disparities such as opioid misuse, workplace violence and mental health. Partnerships with farm media were solidified and allowed us to reach thousands of farmers across the country. Countless radio, TV and print media interviews resulted in news stories that educated on prevention tips and action-oriented approaches to respond to emerging health threats.

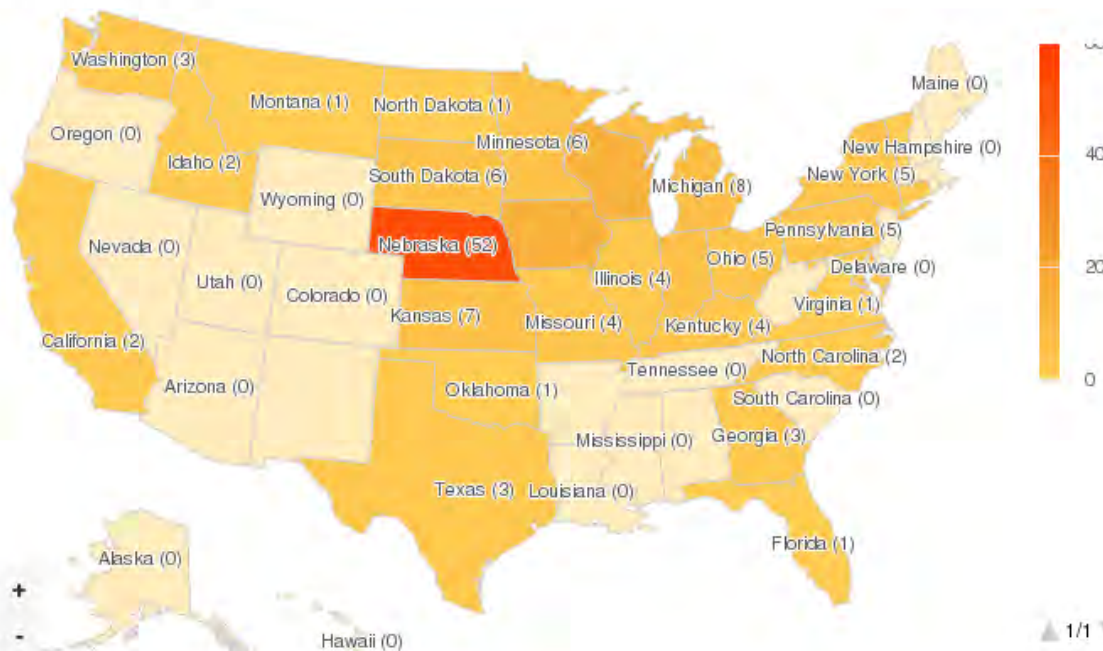
AgriSafe reached a potential **58.53 million** people through traditional and social media outlets between January 1, 2019 to December 31, 2019. Areas of impact can be seen in the map below.



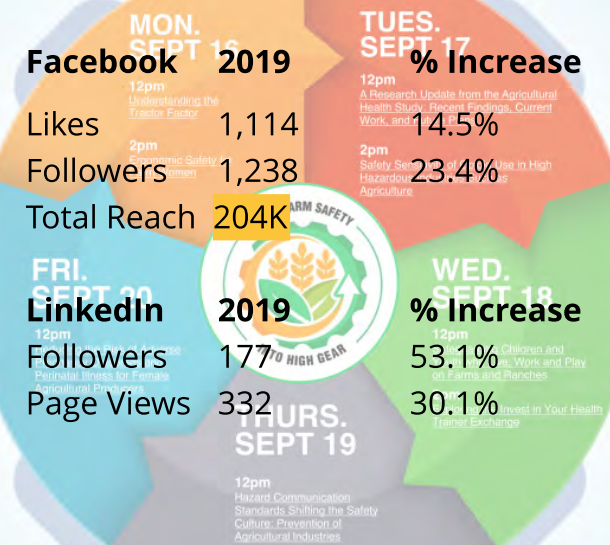
AgriSafe launches new online learning platform!

AgriSafe launched its new learning management system in the spring of 2019. All resources and trainings are now housed together on one learning platform, allowing users to access materials when it is convenient for their schedule. Learners can track their individual progress and download a certificate for each completed training.

Heat Map - News



National Farm Safety and Health Week Free Webinars | September 15-21, 2019



STORIES FROM THE FIELD: REAL STORIES FROM REAL PEOPLE

The purpose of our *Stories from the Field* project is to give voice to people who have experienced hardship that challenges their ability to farm or who sought farming as a method to overcome hardship. When we share first person narratives, we open public health dialogue that can stimulate action. We are thankful to both Carrie Portell and Cindy Stockamp for their dedication of time and self-discovery. We hope their stories aid in your work to understand the many facets of agriculture and how the farm can be a place of healing.



Veterans face many challenges while on active duty and when they transition home. Cindy Stockamp has dedicated her life to her country and has overcome many obstacles. AgriSafe would like to thank Cindy for her continued service!

Carey Portell was hit by a drunk driver. Her story of overcoming many barriers to continue to work in agriculture is inspiring. Thank you, Carey, for sharing your story.



YOGA THE AGRISAFE WAY



DEDICATION TO THE MIND AND BODY

TOTAL FARMER HEALTH



Total Farmer Health =

Healthy Mind + Healthy Body

Healthy minds and bodies are an outcome of Total Farmer Health. Through a new initiative, AgriSafe trained 300 rural health care professionals and 200 rural leaders to recognize potential signs and symptoms of stress, identify people who may be in need of mental health support, and connect them with resources for information and care.

We believe that with proper education and access to knowledgeable health professionals, farmers can live a happy, healthy and productive life.

USDA Farm Ranch Stress Assistance Award

AgriSafe received \$480,000 in FY 19 funds to lead a regional network of organizations who are dedicated to reducing farm stress. Known as the Southern Region Farm and Ranch Stress Assistance Network (S-FRSAN), the network aims to develop innovative programs and expand on best public health practices to meet the increasing needs of southern farm families.

Southern Region Farm and Ranch Stress Assistance Network Map (S-FRSAN)



FLOOD RESPONSE: THERE TO MEET THE NEED

The long standing partnership between AgriSafe and the Central States Center for Agricultural Safety and Health (CS-CASH) allowed these two organizations to launch a rapid public health response to the 2019 winter floods. Communities throughout the Midwest received flood recovery training, personal protective equipment and agricultural health services as a result of an established relationship between AgriSafe and CS-CASH. AgriSafe embraces an organizational culture that is responsive to these emerging health threats and is ready to activate trusted partnerships.



AgHealth
Central States
Center for Agricultural
Safety and Health



Strategic Alliances Impact Rapid Response to Emerging Agricultural Health Threats

March 12-13, 2019
With several inches of snow on the frozen ground, 30 inches of rain fell in a 24-hour span. Severe County emergency management officials and communities of potential flooding. North Bend city officials and residents began sandbagging properties. Schools closed.

March 14, 2019
Floods River near flood stage backing up drainage ditches and streams. Call for evacuation of homes in flood zone. Narrow water flow caused loss in 300-400 feet deep flooding nearby like housing developments. Water flow diverge energy and speed backing barns and causing them to float. Inlet. Firefighters and city officials take on all night watch.

March 15, 2019
Volunteers evacuated cattle. Three highways exit leaving North Bend closed. North highway exit congested by water per vehicle. Windmills given 30 minutes to gather family and belongings to escape as well as evacuate buildings take an 18th of a minute.

March 16-17, 2019
Social Media is primary means of connection to flood updates as well as Facebook live posts by local newspaper editor. Firefighter Chief Emergency management officials discuss evacuation. Restoration of the depth and location of the disaster calls to left-hand community members assigned to local departments to assist disaster plan.

March 18, 2019
Residents allowed into homes. Offer to those taken from shelter. Evacuation of homes. Disaster assistance at high school including school and insurance support and insurance. Relief Headquarters. Personal protective equipment, water available to consume. Residents evacuated. Disaster assistance at high school including school and insurance support and insurance. Relief Headquarters. Personal protective equipment, water available to consume. Residents evacuated.

March 21, 2019
Winter Flood Recovery webinar conducted by AgriSafe Network and CS-CASH. Questions remain about safety of home, livestock and equipment. Many of residents remain. Evacuation. Community members with support and safety. Many of residents remain. Evacuation. Community members with support and safety. Many of residents remain. Evacuation. Community members with support and safety.

March 20, 2019
Volunteer center about as hundreds of volunteers arrive to help. Lists of residential needs released to clean up process in full 9th. Release vaccination clinic and other. Many of residents remain. Evacuation. Community members with support and safety. Many of residents remain. Evacuation. Community members with support and safety.

March 22-24, 2019
Volunteers and center. Evacuation. Community members with support and safety. Many of residents remain. Evacuation. Community members with support and safety. Many of residents remain. Evacuation. Community members with support and safety.

March 30-31, 2019
Ohio Rural Relief group arrive and donate over \$25,000 in farming, feed, and livestock. Flood relief. Tools, food and 30 hours of volunteer help. From 20 individuals. Concentrated and coordinated effort jumpstarted the work of farmers who initially refused and then realized the power of farmer helping farmer. Food and coordination with city and farm. neighbors enabled North Bend to get in more recovery and healing.

March 19, 2019
Volunteer center opened. Community members with support and safety. Many of residents remain. Evacuation. Community members with support and safety.

March 21, 2019
Winter Flood Recovery webinar conducted by AgriSafe Network and CS-CASH. Questions remain about safety of home, livestock and equipment. Many of residents remain. Evacuation. Community members with support and safety. Many of residents remain. Evacuation. Community members with support and safety.

March 22-24, 2019
Volunteers and center. Evacuation. Community members with support and safety. Many of residents remain. Evacuation. Community members with support and safety. Many of residents remain. Evacuation. Community members with support and safety.

March 30-31, 2019
Ohio Rural Relief group arrive and donate over \$25,000 in farming, feed, and livestock. Flood relief. Tools, food and 30 hours of volunteer help. From 20 individuals. Concentrated and coordinated effort jumpstarted the work of farmers who initially refused and then realized the power of farmer helping farmer. Food and coordination with city and farm. neighbors enabled North Bend to get in more recovery and healing.

March 12-13, 2019
With several inches of snow on the frozen ground, 30 inches of rain fell in a 24-hour span. Severe County emergency management officials and communities of potential flooding. North Bend city officials and residents began sandbagging properties. Schools closed.

March 14, 2019
Floods River near flood stage backing up drainage ditches and streams. Call for evacuation of homes in flood zone. Narrow water flow caused loss in 300-400 feet deep flooding nearby like housing developments. Water flow diverge energy and speed backing barns and causing them to float. Inlet. Firefighters and city officials take on all night watch.

March 15, 2019
Volunteers evacuated cattle. Three highways exit leaving North Bend closed. North highway exit congested by water per vehicle. Windmills given 30 minutes to gather family and belongings to escape as well as evacuate buildings take an 18th of a minute.

March 16-17, 2019
Social Media is primary means of connection to flood updates as well as Facebook live posts by local newspaper editor. Firefighter Chief Emergency management officials discuss evacuation. Restoration of the depth and location of the disaster calls to left-hand community members assigned to local departments to assist disaster plan.

March 18, 2019
Residents allowed into homes. Offer to those taken from shelter. Evacuation of homes. Disaster assistance at high school including school and insurance support and insurance. Relief Headquarters. Personal protective equipment, water available to consume. Residents evacuated.

March 20, 2019
Volunteer center about as hundreds of volunteers arrive to help. Lists of residential needs released to clean up process in full 9th. Release vaccination clinic and other. Many of residents remain. Evacuation. Community members with support and safety. Many of residents remain. Evacuation. Community members with support and safety.

March 21, 2019
Winter Flood Recovery webinar conducted by AgriSafe Network and CS-CASH. Questions remain about safety of home, livestock and equipment. Many of residents remain. Evacuation. Community members with support and safety. Many of residents remain. Evacuation. Community members with support and safety.

March 22-24, 2019
Volunteers and center. Evacuation. Community members with support and safety. Many of residents remain. Evacuation. Community members with support and safety. Many of residents remain. Evacuation. Community members with support and safety.

March 30-31, 2019
Ohio Rural Relief group arrive and donate over \$25,000 in farming, feed, and livestock. Flood relief. Tools, food and 30 hours of volunteer help. From 20 individuals. Concentrated and coordinated effort jumpstarted the work of farmers who initially refused and then realized the power of farmer helping farmer. Food and coordination with city and farm. neighbors enabled North Bend to get in more recovery and healing.

Hundreds of volunteers arrive to help.

After two weeks of being closed, school announced re-opening.





Nurses and farmers have many characteristics in common. They have a strong work ethic, their work brings nourishment to people and they value team work. AgriSafe recognized back in 2003 that nurses are on the frontline caring for occupational related health conditions that farmers face. AgriSafe was formed to give back to those nurses and raise their competency to care for the agricultural community. We are proud to have just completed the second year of the AgriSafe Nurse Scholar training program with 31 graduates in 2019. Our Nurse Scholar program blends excellence in distance education with expert instructors many of whom are also nurse leaders.

Courses taught include:

- Increasing the Use of Hearing Protection Among Farmers: Best Practices

Interested in sponsoring the Nurse Scholar Program? Checkout this video to learn more!



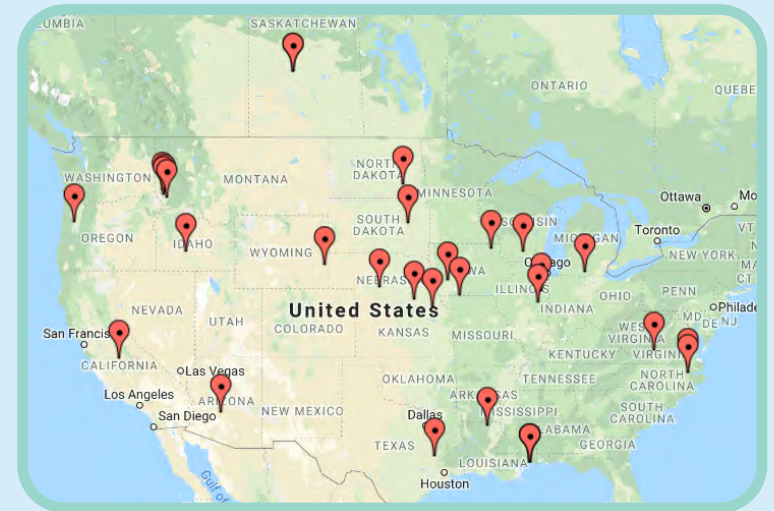
Find out how you can become a sponsor!

www.agrisafe.org

Natalie Roy, MPH | Executive Director | AgriSafe Network
nroy@agrisafe.org | 985-845-1116

Meet the Nurse Scholars!

In 2019 AgriSafe trained 31 Nurse Scholars from all over the United States, as well as in Canada.



We asked our graduates why they enrolled in the training and we found that one common thread they all shared was the desire to serve their farming community. Be inspired by their stories in the video below.

"The course is needed for nurses with little knowledge about agricultural health and safety issues. Of course the biggest challenge is recruiting these folks for generally they do not know what they do not know or need to know."

-Susan Jones, PhD, RN, CNE, ANEF, AgriSafe Nurse Scholar

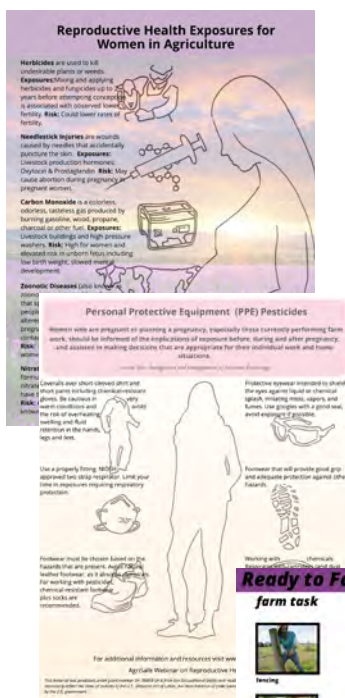


SAFETY IN AGRICULTURE: WOMEN'S HEALTH

AgriSafe trained a total of **546 people** with a focus on women ag producers in the United States. **In 2019**, we launched **3 new topics** and developed **2 new resources including Spanish resources**. This work wouldn't have been possible without our key stakeholders on the 2019 Women's Advisory Council.

Presentations:

- Hazard Communication Standards
- Ergonomic Safety for Farm Women
- Reducing the Risk of Adverse Pregnancy Outcomes and Perinatal Illness



AgriSafe developed “Reproductive Health Exposures for Women in Agriculture” resource which identifies top agricultural exposures and their risks for pregnant women. This is also available in Spanish.

Page two of the “Reproductive Health Exposures for Women in Agriculture” resource features a special section on personal protective equipment for pesticide use. The resource focuses on the Environmental Protection Agency statement on pesticide use for pregnant women.



The newly developed two- page “**Ready to Farm**” resource was created to address ergonomic issues with women who work in agriculture. The tool associates common farm tasks with associated muscles and poses to improve muscle strength and flexibility. This tool has also been translated to Spanish.

2019 Women's Advisory Council



Shari Kuther, RN,
Director of Population Health for St. Mary's Clearwater Valley Hospital in Cottonwood and Orofino, Idaho



Dr. Amber Adams-Progar,
Assistant Professor and Dairy Management Specialist in the Department of Animal Sciences at Washington State University



Amy Rademaker,
Rural Health and Farm Safety Specialist at Carle Foundation Hospital, Illinois



Marie Reed, BSN, RN,
Retired Public Health and Safety Specialist, Community Health, Texas Dept. of State Health Services. Currently Farms in Anderson County, Texas



Jessica Wilburn, RN, MSN, CEN



AgriSafe continues to focus on youth in agriculture. Through our open share platform, five modules were developed for agricultural educators and youth leaders, which includes curriculum, classroom recordings and classroom activities. In 2019, **145 trainers** are now equipped to train on the following topics:

- Say What? Protecting your Hearing
- Cover up! Head to Toe Personal Protective Equipment
- Stay Cool! Prevention of Heat Related Illness
- Stop Zoonosis in its Tracks - Prevention of Zoonosis
- Where Y'at? Using Mapping to Define Hazards in Agriculture

2019 National FFA Convention AgriSafe participated in the Ag Health & Safety Section during the 92nd FFA National Convention. As an activity for FFA students, AgriSafe had a live demonstration of "Tracking Zoonosis Bingo."



AGRISAFE IN ACTION

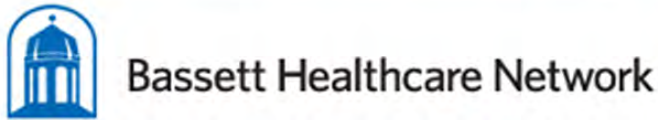


AGRISAFE IN ACTION



WE ARE GRATEFUL

FOR THE PARTNERSHIPS AND SPONSORS THAT MAKE OUR WORK POSSIBLE!



The Voice of Louisiana Agriculture.



NC STATE UNIVERSITY



Protecting the People Who Feed the World



EXTENSION

MIGRANT CLINICIANS NETWORK





Protecting the People Who Feed the World

© AgriSafe Network, Inc All Rights

Reserved 8342 NICC Drive, Peosta, IA 52068 Phone: (866) 312-3002 | Email:
info@agrisafe.org