

Spirit of Change

2011 Annual Report



Protecting the People who Feed America

Perseverance Innovation Giving

Who We Are

The AgriSafe™ Network, a non-profit national membership organization, represents health professionals and educators who are concerned about the health and safety of farm families. Many agricultural injuries, diseases, and fatalities can be prevented through the delivery of agricultural occupational health services.

Farmers Who Feed Our Nation

experience an increased incidence of:

- respiratory diseases
- zoonotic infections
- skin cancer
- musculoskeletal disorders
- hearing loss
- depression
- disabling injuries
- occupational fatalities

Our Core Values

We believe that providing occupational health services to farmers will improve the quality of their lives and those of future generations.

"Agrisafe has provided education and training to our Farm Bureau staff and volunteers through webinars and workshops.

As an extension of that training, our members can be safer and more aware of health-related issues thanks to the programs of AgriSafe."

Marsha H. Purcell, CAE

Director

Membership and Program Development American Farm Bureau Federation

Our Core Strength

Our core strength is based upon the professional standards required to deliver AgriSafe services. Only health professionals who have received extensive training in the field of agricultural health and safety earn the right to be named "AgriSafe Providers". This is where our commitment to uphold the quality of AgriSafe services will never waiver.

Our Dedication

The AgriSafe Network is dedicated to supporting AgriSafe health professionals who are prepared to serve the health care needs of farmers.

Member Benefits Include:

Continuing education via workshop and webinars

- Educational resources
- Technical assistance
- Marketing benefits
- Network opportunities with other clinicians and experts in the field
- Updates on the most cutting-edge developments in agricultural health and safety

Chairperson's Message

Farming and ranching is in my blood, it defines who I am and what I want to achieve. AgriSafe's mission is also in my blood. It drives my spirit and desire to provide better quality health care to agricultural producers throughout the country. Excellence in rural health care can only be realized through a drastic shift in the quality of occupational health care and training of rural health professionals.



The spirit of AgriSafe has always been to align with professionals and organizations who recognize that farmers and ranchers deserve a better quality of life. Agricultural producers work hard for our country and its time for us to assure they have access to the best occupational health care.

As always, we want to hear from you. Tell us how we can improve and meet the needs of those who "Feed America".

Denise Andress, RN, BSN
Chairperson

2011 Board of Directors

Denise Andress, RN, BSN
Chairperson
Education and Clinical Coordinator
Director at Southwest AHEC - Hettinger, ND

Mike Brown
Murphy Family Ventures, LLC
Wallace, NC

Jim Carrabba, MS
New York Center for Agricultural Medicine & Health
Cooperstown, NY

Sandi Cihlar
Vice Chairperson
Mosinee Farmer - Mosinee, WI

William Couldry, PhD
Andrew County Health Department
Savannah, MO

Kelley Donham, MS, DVM
Iowa's Center for Agricultural Safety & Health
University of Iowa - Iowa City, IA

Barbara Gallagher, RN
CommWell Health
Dunn, NC

Susan Guin, MSN
Secretary of Membership
University of Alabama - Tuscaloosa, AL

Charlotte Halverson, BSN, COHN-S
National Education Center for Agricultural Safety
Peosta, IL

Amy K. Liebman, MPA, MA
Migrant Clinicians Network
Quantico, MD

Peter Lundqvist, PhD, Professor
Swedish University of Agricultural
Alnarp, Sweden

Fred Moskol
Madison, WI

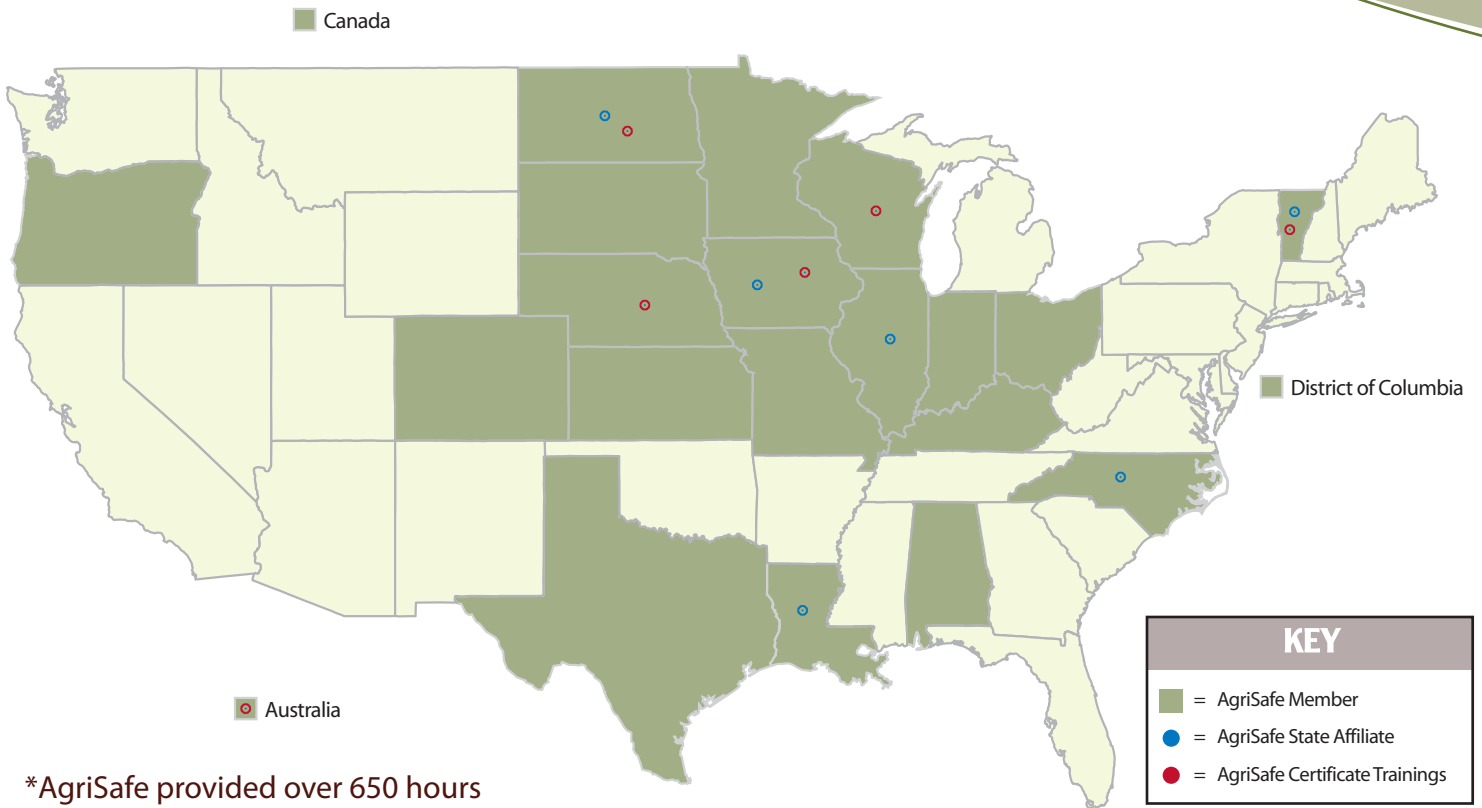
Robin Tutor, MPH, OTR/L
President of Membership
NC Agromedicine Institute - Greenville, NC

Jim Williams, BS
Treasurer/Secretary
AgrAbility Unlimited - Bloomington, IL

Spirit of Giving

AgriSafe was founded in 2003 by a core group of caring board members who envisioned a future where farmers had access to highly trained health professionals. Kelley, Charlotte, Jim and Fred's board term has now expired but their passion will impact the lives of future farm families. Thank you for your nine years of service!

Members in 21 States & 2 Countries



*AgriSafe provided over 650 hours of technical assistance in 2011

"I will never forget the words of a young farmer who I identified as hypertensive. The farmer later told me 'You saved my life! The doctor told me I would have had a stroke if I had not been treated!'"

Barbara Gallagher, RN
CommWell Health
Dunn, NC

"Forty percent of Iowans live in rural areas and almost over 85% of the land is for agricultural purpose. The Iowa Office of Rural Health understands the importance of agricultural safety, health and disease prevention for farm communities, families and workers. We are pleased to partner with the AgriSafe Network to fund and support their projects and good works."

Gloria Vermie, RN, MPH
State Office of Rural Health Director
Des Moines, Iowa



Executive Director's Message

Today when I speak about the health disparities found among agricultural producers I want to see change happen immediately. Why has it taken so long to shift the cultural norm so that agricultural producers can have a better quality of life? I have grown impatient waiting for this change but in retrospect, change has occurred. It has occurred because of leaders who use perseverance, collaboration and innovation to improve the lives of others. These people are known as *Changemakers*. Our staff, board, volunteers and members are at the front line of change. They are the people who carry the passion and compassion to serve agricultural producers. After almost ten years since its inception, AgriSafe is uniquely positioned to bring together forces for change and forge a common agenda for better quality occupational agricultural health care.

Natalie Roy, M.P.H.
Executive Director

2011 Staff



Natalie Roy, M.P.H.
Executive Director



Carolyn Sheridan, RN, BSN
Clinical Director



Stacey Jenkins, BA
Distance Education Coordinator



Dayna Schmidt
Financial Analyst



LaVonne Van Voorst
Membership Coordinator
Administrative Assistant



Janie Boyer
Outreach Coordinator

Spirit of Perseverance

AgriSafe in partnership with the National Education Center for Agricultural Safety (NECAS) received a highly competitive OSHA grant to improve the capacity to train employees and workers in agriculture. OSHA funding enables AgriSafe to develop "train the trainer programs" so that AgriSafe Providers across the country can deliver high quality training to Agribusiness.

2011 Network Members Providers

Alabama

Susan Guin, MSN
University of Alabama, *Tuscaloosa*

Iowa

Katie Anderson, MS
Fort Madison Community Hospital, *Fort Madison*

Dixie Daugherty, RRT,RCP

Denise Bruckman, RN
AgriSafe of Van Buren County, *Keosauqua*

Lavonne Galles, RN, BSN

Karla Anthony, CRT
AgriSafe of Floyd Valley, *LeMars*

Lynn Armstrong, RN, BSN

Lisa Nelson, APNP
Mahaska Health Partnership, *Oskaloosa*

Charlotte Halverson, RN, BSN

Dan Neenan, EMT
National Education Center for Agricultural Safety, *Peosta*

Carolyn Sheridan, RN, BSN

Deb Abel
AgriSafe Spencer Hospital, *Spencer*

Melissa Pearson, NP

Baxter Health Services, *Baxter*

Illinois

Greg Martindill, PA-C
Carle Physicians Group, *Danville*

Donna Gail, CNP

East Adams County Rural Health Clinic, *Golden*

Missouri

Paulette Powelson, RN, Pike County Memorial Hospital,
Louisiana

North Carolina

Barbara Gallagher, RN

Jill Holland, FNP
CommWell Health, *Dunn*

Tom Irons, MD

Annette Greer, PhD
Brody School of Medicine, *Greenville*

South Dakota

Stephanie Teunissen, RN
Sanford Clinic, *Sioux Falls*

Vermont

Betsy Hedley, RN

Cathy Mlcuch, BSN, MSW, MPH
Community Health Services of Addison County, *Middlebury*

Karen Burke, MD

Milton Family Practice, *Milton*

Wisconsin

Janice Soczka, RN, BSN, MSN

Marshall Cusic, MD

Tim Ablett, MD
Marshfield Clinic, *Marshfield*

Ruth Nelson-Lau, NP

Heidi Duley, RN,
Ministry Good Samaritan Health, *Merrill*

Lisa Schiller, APNP,

Tod Lewis, MD

Lynn Kananen, APNP
ThedaCare Physicians, *Shawano*

Thomas Whetston, PA-C, MS,

Gundersen Lutheran- Prairie du Chien Clinic, *Prairie du Chien*

Australia

Susan Brumby

Western District Health Service/National Center for Farmer
Health, *Hamilton Victoria*

2011 Network Members

State Affiliate

Iowa

Eileen Fisher, PhD

Kelley Donham, MS, DVM

Iowa's Center for Agricultural Safety & Health, *Iowa City*

Illinois

Robert (Chip) Petrea

Agricultural Safety & Health Network, *Urbana*

Maryland

Ann Carruth, DNS, RN, Professor

Southeaster LA University, *Hammond*

North Carolina

Robin Tutor, MPH, OTR/L

NC Agromedicine Institute, *Greenville*

North Dakota

Denise Andress, RN, BSN

Kristina Wang

Southwest Area Health Education Center, *Hettinger*

Vermont

Margaret Gilman, RN

Jean McCandless, MSW

Karen Schneider

VT Farm Health Task Force, *Rutland*

Spirit of Partnership

Neil understands first-hand the difficulty of farming and working with grain dust. His allergies were the driving force between the launch of his company "LoadOut Technologies" 3 years ago. Neil knows there are safer more efficient ways to farm with the use of mobile technology. Under his leadership, AgriSafe and LoadOut Technologies are developing state of the art innovations that will bring health management tools to the agricultural industry.

A true private/public partnership of social change.

Late Fall of 2012 AgriSafe and LoadOut will release the first of many tools to *Protect the People who Feed America.*



Organizational

Colorado

Beth Ingram

Brenda Baumgarten

Colorado AHEC, *Aurora*

Washington, DC

Jessica Werder

Levy Schroeder

Association of Farmworker Opportunity Programs, *Washington, DC*

Iowa

Carol Heetland, RN, BSN

Town & Country Farm Safety for Kids, *Ackley*

Douglas Beardsley, MPH, CPHA

Johnson County Public Health, *Iowa City*

Illinois

Vera Bunting, LPN

Gibson Area Hospital & Health Services, *Gibson City*

Amy Rademaker

Carle Hospital, *Urbana*

Maryland

Amy K. Liebman, MPA

Migrant Clinicians Network, *Quantico*

Missouri

Luann Miller, RN, MSN, FNP

Ste Genevieve County Memorial Hospital, *Ste Genevieve*

New York

Jim Carrabba

New York Center for Agricultural Medicine & Health, *Cooperstown*

Wisconsin

Marlene Stueland, MGR.

National Farm Medicine Center, *Marshfield, Marshfield*

2011 Network Members

Individual

California

Traci Townsend

Carmel Valley

Colorado

Claudia Arrieta, Research Associate

CO Environmental Pesticide Ed Program, *Fort Collins*

Iowa

Betsy Buffington, Pesticide Education

Iowa State University, *Ames*

Eileen Fisher, PhD

Iowa's Center for Agricultural Safety & Health, *Iowa City*

Teresa J. Lee, PA-C

Wheaton Franciscan Healthcare, *Manson*

Illinois

Jim Williams

AgrAbility Unlimited, *Bloomington*

Peggy Romba

Illinois Farm Bureau, *Bloomington*

Indiana

Amber D. Wolfe

National Arthritis Foundation, *Indianapolis*

Kansas

Kerri Ebert

KS AgrAbility Project, *Manhattan*

North Dakota

Melana Howe, MA

Howe Enterprises, *Hettinger*

Oregon

Kaci Buhl, MS, Project Coordinator

National Pesticide Information Center

OR State University, *Corvallis*

Texas

Doug Ullrich, Professor

Sam Houston State University, *Huntsville*

Vermont

Scott Meyer

VT Department of Labor, *Hyde Park*

Wisconsin

Etta Lovitt, MD, ER Physician

Wisconsin Rapids

Canada

Vivianne Servant, Pesticide Certification Specialist

Alberta Environment, *Alberta*

Provider of the Year

Barbara Gallagher was the 2011 recipient of the AgriSafe Provider of the Year Award. This award is given to an AgriSafe provider who demonstrates compassion and leadership that our founding member, Jean Hirth exhibited in 2003. Barbara has been energetic, creative, and resourceful in her efforts to deliver AgriSafe of CommWell Health services and expand AgriSafe services throughout North Carolina.



Trainings

Instructed by Carolyn Sheridan, AgriSafe Clinical Director

Agricultural Health and Medicine Course

Deakin University Australia

Victoria, Australia - March

Occupational and Environmental Health for Rural Health Professionals, The Core Course

University of Iowa

Iowa City, Iowa - June

Agricultural Medicine: Occupational and Environmental Health for Rural Health Professionals

University of Nebraska Medical Center

Omaha, Nebraska - July

Agricultural Medicine: The Core Course – Occupational and Environmental Health for Rural Health Professionals

Marshfield Clinic

Marshfield, Wisconsin - October

Agricultural Medicine: The Core Course – Occupational and Environmental Health for Rural Health Professionals

University of Vermont, College of Medicine

Fairlee, Vermont - October

Occupational and Environmental Health for Rural Health Professionals:

Anticipation, Recognition, Treatment and Prevention

University of North Dakota and Lake Region State College

Devils Lake, North Dakota - November

Successful Farming Articles

Collaboration with Cheryl Tevis on *Healthy Manager* articles

"Stay Safe and Sound"

"Don't Hold Your Breath"

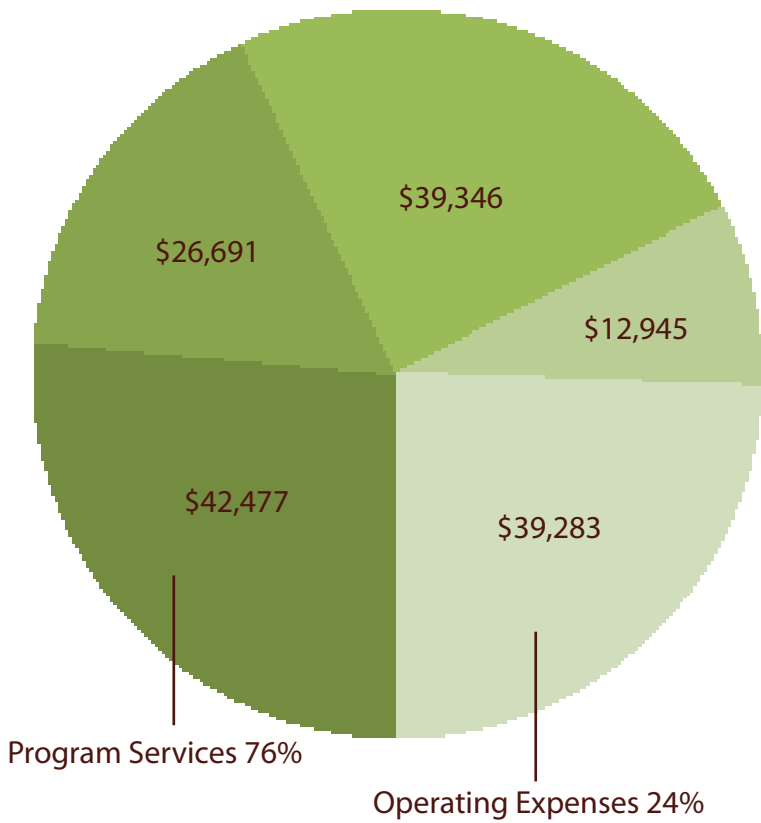
"What's your Baseline Number?"

"A Healthy Game Plan"

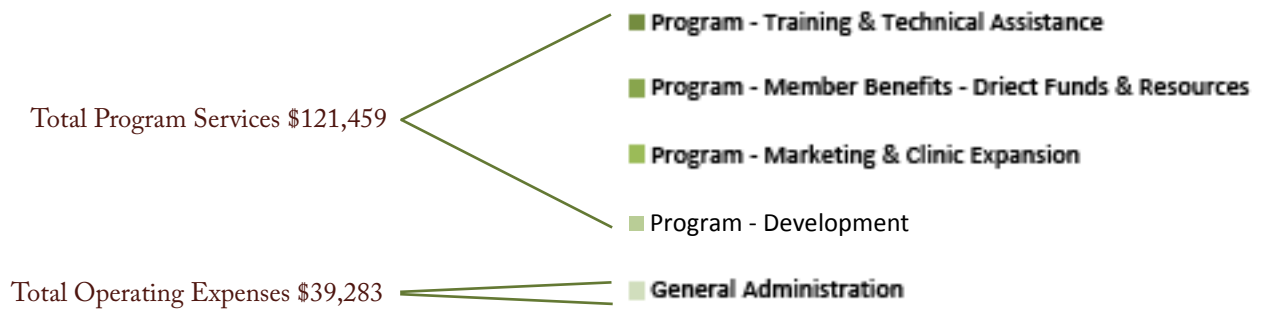
"A Salty Conversation"



Financial Statement



Total Expenses = \$160,742



Support and Revenue

Grant Income	\$133,526
Sales of Safety Products	5,919
Membership Dues & Contributions	11,360
Miscellaneous Income	5,063
Interest Income	<u>43</u>

Total Support and Revenue 155,911

Total Expenses 160,742

Change in Net Assets (4,831)

Net Assets at Beginning of Year 12,198

Net Assets at End of Year \$ 7,367

AgriSafe 2011 Webinars

February

Health Care Reform Can Mean Improving Health for Rural People

Keith Mueller, PhD
University of Iowa

Falls and Aging Farmers

Deborah Reed, PhD, RN, MSPH
University of Kentucky

March

Pesticides and Farm Worker Health
co- sponsored by MCN

Matthew Keifer, MD, MPH
Marshfield Research Foundation
National Farm Medicine Center

April

The National Pesticide Information Center (NPIC): Practical Resources for You and the People You Serve

Kaci Buhl, MS
Oregon State University

May

Prevention of Osteoarthritis in Rural Youth

Amber Wolfe
Arthritis Foundation-Indiana Chapter, Heartland Region

June

Developing Instructional Designs for Educating Hispanic Agricultural Workers

Cesar Asuaje
University of Florida

July

The Impact of Health Care Reform on Rural America

Maggie Elehwany
National Rural Health Association

August

Overcoming Language and Literacy Barriers in Safety and Health Training

Thomas A. Arcury, PhD
Wake Forest University School of Medicine

September

Farm Operators and Hearing Protection: Can we make a difference?

Marjorie McCullagh, PhD, RN, APHN-BC, COHN-S
University of Michigan

October

Proposed Changes to Child Labor

Regulations in Agriculture (co-sponsored with CASN)

Mary Miller, RN, MN
Washington State Department of Labor and Industries

November

Investigation of an Escherichia coli 0111 Outbreak at a State-run Correctional Facility (Colorado, 2010)

Meredith Towle
Colorado Department of Public Health and Environment
Corey Campbell
Center for Disease Control/National Institute of Occupational Safety & Health
Stephen Reynolds, Ph.D., CIH
Fellow American Industrial Hygiene Association

Spirit of Innovation

AgriSafe embodies a spirit for innovation and has worked since the inception in 2003 to make a real world impact. Over five years ago, AgriSafe was one of the first agricultural health organizations to deliver training through web-based distance education. The start was slow and attendance was low. Critics questioned whether a nonprofit should deliver training. Today, our webinars average well over fifty participants with both international and national attendance. Professionals across the country contact AgriSafe to host webinars because our dissemination arm is very long. We aim to use distance education to bridge Research to Practice (R2P). This year we advanced our technology to use the best software (GO TO Webinar) to deliver high quality trainings.

2011 Presentations and Exhibits

January

Ag Connect Expo and Summit, Atlanta, Georgia

Proactive Prevention in Agriculture, Successful Farming Magazine Live Streaming Presentation

American Farm Bureau Federation Annual Meeting, Atlanta, Georgia

Prevention of Noise Induced Hearing Loss and Preventing Skin Damage to Reduce Risk of Skin Cancer

National Rural Health Association Annual Conference, Washington DC

Policy Partner Presentation

June

International Society For Agricultural Safety Safety & Health, Boise, Idaho

AgriSafe Strengthens Rural Health Care Workforce

AgriSafe My True Hero video and song presentation

November

Midwest Rural Agricultural Safety & Health Forum, Des Moines, Iowa

Making the Impact: Positive Behavior Change among Community College Students

National Rural Health Day, National Live Webcast

AgriSafe Celebrates National Rural Health Day

My True Heroes

"My True Heroes" is a song commissioned in 2011 by the AgriSafe Network to show support for the agricultural community and the healthcare professionals dedicated to protecting them. AgriSafe is harnessing the passion for music to promote our cause. The song is available through direct download and by purchasing download cards for an event.



Sponsors and Program Partners

As a non-profit organization the AgriSafe Network is strengthened by the generosity of sponsors and program partners. The following sponsors and partners are committed to improving the safety and health of agricultural communities.

Successful
Farming



MCN



Great Plains Center
for Agricultural Health



www.agrisafe.org
Follow us on Facebook at:
www.facebook.com/agrisafe.network

Phone: 866-312-3002
E-Mail: info@agrisafe.org

P.O. Box 1338
Spencer, Iowa, 51301

The AgriSafe Network is a nonprofit 501(c)3 therefore, all donations are tax exempt.
If you are interested in supporting the Network, please contact us at 866-312-3002 or E-Mail us at info@agrisafe.org

